



TATA HITACHI

Reliable solutions

ZAXIS220_{LC}



HYDRAULIC EXCAVATOR

Model Code : ZX220LC

Engine Rated Power : 170 PS (125 kW)

Operating Weight : ZX220LC (STD) : 21 200 - 21 600 kg

ZX220LC (HD) : 21 300 - 21 700 kg

Backhoe Bucket : ISO Heaped : 0.90 - 1.22 m³

NEW ZAXIS *Now, with the Power of GI*

A ZAXIS hallmark – industry-leading hydraulic technology, and performance no other can beat.

The New ZAXIS-GI Series Excavators provide reliable solutions: impressive fuel economy, swift front movements, and easy operation. Another highlight in the new Zaxis-GI series is the optimized hydraulic system and engine which is the result of Hitachi's technological prowess and expertise.

The New ZAXIS-GI Series features the key benefits of high power, high fuel efficiency and high durability, all of which serve to ensure best in class performance and low running costs.



More Production with Less Fuel

Page 4-5

- 10% Reduction in Fuel Consumption
- Further fuel reduction in the ECO mode
- Swift front movements with HIOS III hydraulics
- Powerful lifting operation
- Enhanced power boost
- Recommended options
- Boosted swing torque
- Easy-to-use attachments



No Compromise on Operator Comfort

Page 8

- Comfortable operating environment
- Comfort-designed operator seat
- Robust cab



Pursuits of Performance and Durability

Page 6-7

- State-of-the art R&D and quality control
- Durable, reliable engine
- Rock-solid, durable front attachment
- Strengthened undercarriage
- Proven upperstructure



Simplified Maintenance

Page 9

- Dust-proof indoor net
- Grouped remote inspection points
- Attractive, robust body
- Low life cycle costs



Tata Hitachi Support Chain

Page 10

- Remote Fleet Management with Global e-Service
- Control your fleet with ConSite
- Parts and Service



Variants

Page 14-15

- Quarry
- Standard



More Production with Less Fuel

Powerful Lifting Operation

The Auto Power Lift mode, which automatically increases the surge lifting force by 10% when needed, allows for powerful lifting of buried concrete pipes or sheathing sheets.

Boosted Swing Torque

Allows for powerful wall cutting with the bucket, and smooth swing operation on slope.

Enhanced Power Boost

The Power Boost mode allows the operator to surge 10% more digging force for powerful excavation by pressing its button on the control lever.

Swift Front Movements with HIOS* III Hydraulics

Operating speed increases without impacting the fuel consumption thanks to the HIOS III hydraulic system, developed by industry-leading hydraulic technologies and a wealth of experience. Actuators work quickly by boom weight, without needing a regenerative circuit and pressurised oil.

*Human & Intelligent Operation System

Rapid Arm Roll-in

Arm roll-in speed increases by combined flow from arm and boom cylinders through regenerative valves for productive excavation.

Fast Arm Speed During Boom Lowering

Arm speed increases by boom weight during boom lowering, without needing pressurised oil from a pump. That is, arm circuit flow is increased for higher arm speed, allowing for quick loading of a dump truck and positioning of the front end attachment.



10% * Reduction in Fuel Consumption

New ZAXIS-GI Series is a fuel-thrifty excavator that can reduce fuel consumption by 10%, thanks to the HIOS III hydraulic system and engine control system, thereby reducing CO₂ emissions.

*compared with previous models.

Further Fuel Reduction in the ECO mode

The ECO mode, a new economical mode, can further cut fuel consumption, compared to the PWR mode, without sacrificing digging speed by optimal matching of operations.



Attachment piping



HIOS III



Pursuits of Performance and Durability

State-of-the art R&D and Quality Control

Tata Hitachi is known for its technological prowess and product performance. The R&D Division has a track record of excellent design, stress analysis expertise using CAE system, and an abundant production data base. What's more, a large-scale durability test field allows for a series of stringent testing of new machines.



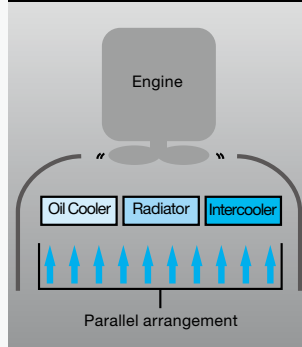
Durable, Reliable Engine

This engine has a track record showing impressive durability at countless tough job sites around the world.

The engine — associated with a rugged design, a direct fuel injection system and an elaborate governor — goes green, and complies with EU Stage II and US EPA Tier 2 emissions regulations.

The cooling system well keeps the engine cool. The engine cover has a wider air suction area, and radiators are arranged in parallel for efficient cooling. This parallel arrangement also facilitates their cleaning.

The ample-capacity intercooler and turbocharger help yield a huge 170 PS (125 kW) output for higher production in shorter job schedule.



Rock-Solid, Durable Front Attachment

The robust boom and arm are designed and analysed using advanced software. They are manufactured to precision using high grade steels with state of art welding robot and machining centres. Thus, durability is built into the front attachments.

The boom top and foot are reinforced with thickened high-tensile steel brackets, which incorporate steel bushings to enhance durability. Arm cylinder and boom cylinders (rod extend ends) cushion shocks at stroke end to cut noise and extend service life.

Joint pins at the front attachment are tightly fit to reduce jolt and sound. The arm-bucket joint is protected by WC thermal spraying on its contact surfaces to reduce wear and jolt.



Strengthened Undercarriage

The X-beam frame is made monolithically with fewer welds for higher rigidity and durability.

Track adjusters absorb impacts to crawlers. Front idlers and adjuster cylinders are integrated to increase durability.

Idler brackets are reinforced and travel motor brackets are thickened for added durability.



X-beam frame



Strengthened track frame



Boom foot

Proven Upperstructure

The upperstructure frame is reinforced with the proven D-section skirt to increase rigidity against damage by obstacles.



Reinforced resin thrust plates



WC thermal spraying

No Compromise on Operator Comfort



Comfortable Operating Environment

The cabin is comfortable with plenty of leg space and excellent visibility. The new compact console gives more leg space. The new door pillar is shifted rearward by 70 mm to widen the entry space for easy access. A new room light, interlocked with the door, turns on when the door opens. The front window is easily removed and stored overhead using slide rails. The overhead, sunroof window can be opened for improved ventilation. Ample air conditioner vents are located strategically for uniform air circulation inside the cab. The control panel and control levers are arranged within easy reach of the operator. AM/FM radio with 2 speakers are available. All these designs focus on enhancing operator comfort and reduction in fatigue levels.

Comfort-Designed Operator Seat

The ergonomically designed operator suspension seat is fitted with a head rest and arm rests for operator comfort. The seat can be adjusted in multiple ways, sliding and reclining, to suit operator's size and preferences. The seat can slide rearward by 40 mm more for added leg space.

Robust Cab

The robust cab, meeting the OPG (Top Guard Level 1), protects the operator from falling objects. The pilot control shut-off lever is provided with a neutral engine start system that permits engine starting only when the pilot control shut-off lever is in lock position.



Monitor



Control panel



Large storage space

Simplified Maintenance



Dust-Proof Indoor Net

A dust-proof indoor net, provided at the front of radiator, can be easily removed and cleaned with compressed air. At the rear of the radiator, air blowing can be done through a one-touch open cover. The air condenser is openable for easy cleaning at its rear.

Grouped Remote Inspection Points

Service points are grouped inside left and right covers for easy accessibility from ground level for convenient inspection and servicing, including water draining from the fuel tank, replenishment of coolant, and replacement of filters. The fuel tank is anti-corrosion coated on its inside, and has a large cleaning port at the bottom. Handrails are provided at convenient locations for easy climbing on to the upperstructure. Slip-resistant plates are located strategically for added safety to the maintenance team.

Electric Fuel Refilling Pump

An electric fuel refilling pump is provided for conveniently filling fuel directly into the tank at the press of a button.



Electric fuel refilling pump

Rugged, Robust Body

Side frame tops of the undercarriage are sloped to let muck slide away. Track adjuster greasing ports are repositioned for easier lubrication, and well protected from muck packing.



Grouped remote filters and inspection points



Utility space and radiators

Low Life Cycle Costs

Service intervals are long enough to slash maintenance costs.

Engine Oil : 500 h
 Engine Oil Filter : 500 h
 Hydraulic Oil : 5 000 h
 Hydraulic Oil Filter : 1 000 h
 Fuel Filter : 500 h



Consumables

Note: Periodic inspection is required to check oil contamination.

Tata Hitachi Support Chain

A full customer support system offered on buying a Tata Hitachi GI Series machine.

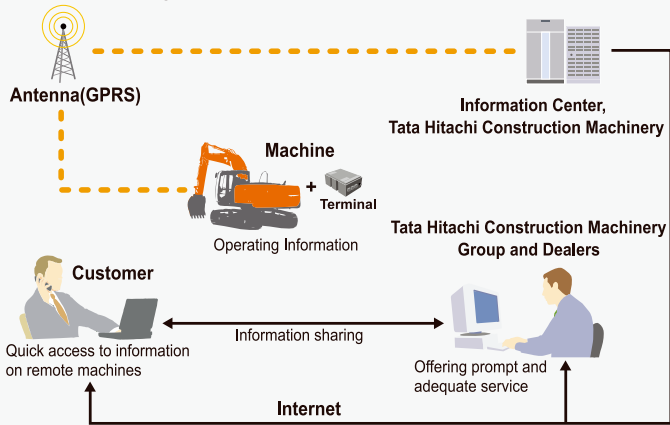


Remote Fleet Management with Global e-Service

Easy access to On-Site Machines through the internet

Global e Service is a convenient and simple system designed to give you valuable information regarding the operations, maintenance, system parameters and alarms of your machines from the convenience of your office. This system can be configured to give you a customised dashboard of the vital parameters that you would like to monitor, to increase productivity and reduce the downtime of your fleet.

The operating data and logs are sent to our servers for processing and then to customers and dealers around the world. This system is available 24 hours a day, all the year round and can be viewed on your laptops and mobile devices through the Internet.



Note: In Some Regions, Global e-Service may not be Available due to Local Regulations.

Main Features of Global e-Service

Global e Service provides easy access to a machine on site conveying operating information and log, including daily operating hours, operations, fuel levels, location, itemised maintenance scheduling, machine's technical parameters and alarm history.



Operation

- Working site of customer machine can be determined.
- Route to working site of customer machine can be determined also.

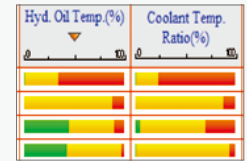
Country/region	Alarm code	Engine type	Alarm Category	Severity
GERMANY	28003.2	EUM-CH	Engine Alarm	1
GERMANY	28003.3	EUM-CH	Engine Alarm	1
GERMANY	28003.2	EUM-CH	Engine Alarm	1
GERMANY	28003.2	EUM-CH	Engine Alarm	1
GERMANY	28003.2	EUM-CH	Engine Alarm	1
GERMANY	28003.2	EUM-CH	Engine Alarm	1
GERMANY	28003.2	EUM-CH	Engine Alarm	1
GERMANY	28003.2	EUM-CH	Engine Alarm	1
GERMANY	28003.2	EUM-CH	Engine Alarm	1
GERMANY	28003.2	EUM-CH	Engine Alarm	1

Alarm function

Information of alarms as causes of machine failures can be received in real time.

Hour meter / Daily report

Daily machine operation hours and remaining fuel can be determined.



Operation information

Hydraulic oil temperature, swing hours and other data are determined.

Monitor your machines closely with ConSite

Data Services

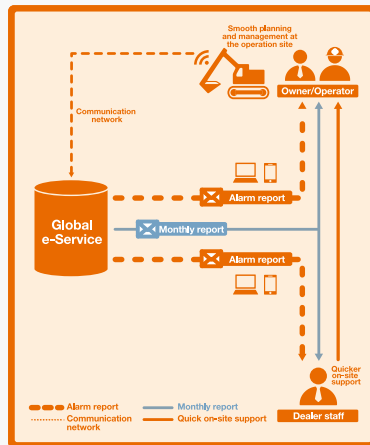


ConSite is a consolidated solution service that links you to your machines on the construction site.

Through this system, we present your machine's key operational data with meaningful insights by tapping into Tata Hitachi's vast experience and database. There are two kinds report services:

- Consolidated monthly operation reports with advice via email.
- Alarm or emergency notifications via email.

These two reports allow you to visualise the operation status of your machine, improve the efficiency of machine management and work closer with Tata Hitachi.



A. Monthly Report

A Detailed monthly operational report helps you to analyse and improve the operational efficiency of your machine.

Key Items included in the report:

- Status of parameters affecting economy.
- Part wise operations time
- Recommended action

B. Alarm Report

If there is an alarm triggered in the machine and the problem requires urgent attention to prevent downtime, an emergency alarm report will be sent to the registered email addresses so that necessary measures can be taken. This information also flows to your authorised service representatives for smoother coordination and to reduce your machine's downtime.

Key items included in the report:

- Machine identification with hour meter details
- Alarm code / name
- Recommended action

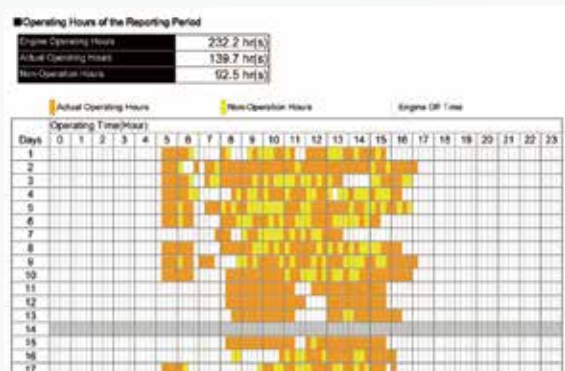
We make IT work



- ✓ Minimise downtime
- ✓ Support your business



Operating Hours and Conditions	Report No.	Machine ID	Date of Report																																																																																																																																																																																																																																																																																																																																																																																																																																																																																																																																																																																																																																																																							
<table border="1"> <tr> <th>Day</th> <th>0</th><th>1</th><th>2</th><th>3</th><th>4</th><th>5</th><th>6</th><th>7</th><th>8</th><th>9</th><th>10</th><th>11</th><th>12</th><th>13</th><th>14</th><th>15</th><th>16</th><th>17</th><th>18</th><th>19</th><th>20</th><th>21</th><th>22</th><th>23</th><th>24</th> </tr> <tr> <td>01</td> <td>0.0</td><td>0.0</td><td>0.0</td><td>0.0</td><td>0.0</td><td>0.0</td><td>0.0</td><td>0.0</td><td>0.0</td><td>0.0</td><td>0.0</td><td>0.0</td><td>0.0</td><td>0.0</td><td>0.0</td><td>0.0</td><td>0.0</td><td>0.0</td><td>0.0</td><td>0.0</td><td>0.0</td><td>0.0</td><td>0.0</td><td>0.0</td><td>0.0</td> </tr> <tr> <td>02</td> <td>0.0</td><td>0.0</td><td>0.0</td><td>0.0</td><td>0.0</td><td>0.0</td><td>0.0</td><td>0.0</td><td>0.0</td><td>0.0</td><td>0.0</td><td>0.0</td><td>0.0</td><td>0.0</td><td>0.0</td><td>0.0</td><td>0.0</td><td>0.0</td><td>0.0</td><td>0.0</td><td>0.0</td><td>0.0</td><td>0.0</td><td>0.0</td><td>0.0</td> </tr> <tr> <td>03</td> <td>0.0</td><td>0.0</td><td>0.0</td><td>0.0</td><td>0.0</td><td>0.0</td><td>0.0</td><td>0.0</td><td>0.0</td><td>0.0</td><td>0.0</td><td>0.0</td><td>0.0</td><td>0.0</td><td>0.0</td><td>0.0</td><td>0.0</td><td>0.0</td><td>0.0</td><td>0.0</td><td>0.0</td><td>0.0</td><td>0.0</td><td>0.0</td><td>0.0</td> </tr> <tr> <td>04</td> <td>0.0</td><td>0.0</td><td>0.0</td><td>0.0</td><td>0.0</td><td>0.0</td><td>0.0</td><td>0.0</td><td>0.0</td><td>0.0</td><td>0.0</td><td>0.0</td><td>0.0</td><td>0.0</td><td>0.0</td><td>0.0</td><td>0.0</td><td>0.0</td><td>0.0</td><td>0.0</td><td>0.0</td><td>0.0</td><td>0.0</td><td>0.0</td><td>0.0</td> </tr> <tr> <td>05</td> <td>0.0</td><td>0.0</td><td>0.0</td><td>0.0</td><td>0.0</td><td>0.0</td><td>0.0</td><td>0.0</td><td>0.0</td><td>0.0</td><td>0.0</td><td>0.0</td><td>0.0</td><td>0.0</td><td>0.0</td><td>0.0</td><td>0.0</td><td>0.0</td><td>0.0</td><td>0.0</td><td>0.0</td><td>0.0</td><td>0.0</td><td>0.0</td><td>0.0</td> </tr> <tr> <td>06</td> <td>0.0</td><td>0.0</td><td>0.0</td><td>0.0</td><td>0.0</td><td>0.0</td><td>0.0</td><td>0.0</td><td>0.0</td><td>0.0</td><td>0.0</td><td>0.0</td><td>0.0</td><td>0.0</td><td>0.0</td><td>0.0</td><td>0.0</td><td>0.0</td><td>0.0</td><td>0.0</td><td>0.0</td><td>0.0</td><td>0.0</td><td>0.0</td><td>0.0</td> </tr> <tr> <td>07</td> <td>0.0</td><td>0.0</td><td>0.0</td><td>0.0</td><td>0.0</td><td>0.0</td><td>0.0</td><td>0.0</td><td>0.0</td><td>0.0</td><td>0.0</td><td>0.0</td><td>0.0</td><td>0.0</td><td>0.0</td><td>0.0</td><td>0.0</td><td>0.0</td><td>0.0</td><td>0.0</td><td>0.0</td><td>0.0</td><td>0.0</td><td>0.0</td><td>0.0</td> </tr> <tr> <td>08</td> <td>0.0</td><td>0.0</td><td>0.0</td><td>0.0</td><td>0.0</td><td>0.0</td><td>0.0</td><td>0.0</td><td>0.0</td><td>0.0</td><td>0.0</td><td>0.0</td><td>0.0</td><td>0.0</td><td>0.0</td><td>0.0</td><td>0.0</td><td>0.0</td><td>0.0</td><td>0.0</td><td>0.0</td><td>0.0</td><td>0.0</td><td>0.0</td><td>0.0</td> </tr> <tr> <td>09</td> <td>0.0</td><td>0.0</td><td>0.0</td><td>0.0</td><td>0.0</td><td>0.0</td><td>0.0</td><td>0.0</td><td>0.0</td><td>0.0</td><td>0.0</td><td>0.0</td><td>0.0</td><td>0.0</td><td>0.0</td><td>0.0</td><td>0.0</td><td>0.0</td><td>0.0</td><td>0.0</td><td>0.0</td><td>0.0</td><td>0.0</td><td>0.0</td><td>0.0</td> </tr> <tr> <td>10</td> <td>0.0</td><td>0.0</td><td>0.0</td><td>0.0</td><td>0.0</td><td>0.0</td><td>0.0</td><td>0.0</td><td>0.0</td><td>0.0</td><td>0.0</td><td>0.0</td><td>0.0</td><td>0.0</td><td>0.0</td><td>0.0</td><td>0.0</td><td>0.0</td><td>0.0</td><td>0.0</td><td>0.0</td><td>0.0</td><td>0.0</td><td>0.0</td><td>0.0</td> </tr> <tr> <td>11</td> <td>0.0</td><td>0.0</td><td>0.0</td><td>0.0</td><td>0.0</td><td>0.0</td><td>0.0</td><td>0.0</td><td>0.0</td><td>0.0</td><td>0.0</td><td>0.0</td><td>0.0</td><td>0.0</td><td>0.0</td><td>0.0</td><td>0.0</td><td>0.0</td><td>0.0</td><td>0.0</td><td>0.0</td><td>0.0</td><td>0.0</td><td>0.0</td><td>0.0</td> </tr> <tr> <td>12</td> <td>0.0</td><td>0.0</td><td>0.0</td><td>0.0</td><td>0.0</td><td>0.0</td><td>0.0</td><td>0.0</td><td>0.0</td><td>0.0</td><td>0.0</td><td>0.0</td><td>0.0</td><td>0.0</td><td>0.0</td><td>0.0</td><td>0.0</td><td>0.0</td><td>0.0</td><td>0.0</td><td>0.0</td><td>0.0</td><td>0.0</td><td>0.0</td><td>0.0</td> </tr> <tr> <td>13</td> <td>0.0</td><td>0.0</td><td>0.0</td><td>0.0</td><td>0.0</td><td>0.0</td><td>0.0</td><td>0.0</td><td>0.0</td><td>0.0</td><td>0.0</td><td>0.0</td><td>0.0</td><td>0.0</td><td>0.0</td><td>0.0</td><td>0.0</td><td>0.0</td><td>0.0</td><td>0.0</td><td>0.0</td><td>0.0</td><td>0.0</td><td>0.0</td><td>0.0</td> </tr> <tr> <td>14</td> <td>0.0</td><td>0.0</td><td>0.0</td><td>0.0</td><td>0.0</td><td>0.0</td><td>0.0</td><td>0.0</td><td>0.0</td><td>0.0</td><td>0.0</td><td>0.0</td><td>0.0</td><td>0.0</td><td>0.0</td><td>0.0</td><td>0.0</td><td>0.0</td><td>0.0</td><td>0.0</td><td>0.0</td><td>0.0</td><td>0.0</td><td>0.0</td><td>0.0</td> </tr> <tr> <td>15</td> <td>0.0</td><td>0.0</td><td>0.0</td><td>0.0</td><td>0.0</td><td>0.0</td><td>0.0</td><td>0.0</td><td>0.0</td><td>0.0</td><td>0.0</td><td>0.0</td><td>0.0</td><td>0.0</td><td>0.0</td><td>0.0</td><td>0.0</td><td>0.0</td><td>0.0</td><td>0.0</td><td>0.0</td><td>0.0</td><td>0.0</td><td>0.0</td><td>0.0</td> </tr> <tr> <td>16</td> <td>0.0</td><td>0.0</td><td>0.0</td><td>0.0</td><td>0.0</td><td>0.0</td><td>0.0</td><td>0.0</td><td>0.0</td><td>0.0</td><td>0.0</td><td>0.0</td><td>0.0</td><td>0.0</td><td>0.0</td><td>0.0</td><td>0.0</td><td>0.0</td><td>0.0</td><td>0.0</td><td>0.0</td><td>0.0</td><td>0.0</td><td>0.0</td><td>0.0</td> </tr> <tr> <td>17</td> <td>0.0</td><td>0.0</td><td>0.0</td><td>0.0</td><td>0.0</td><td>0.0</td><td>0.0</td><td>0.0</td><td>0.0</td><td>0.0</td><td>0.0</td><td>0.0</td><td>0.0</td><td>0.0</td><td>0.0</td><td>0.0</td><td>0.0</td><td>0.0</td><td>0.0</td><td>0.0</td><td>0.0</td><td>0.0</td><td>0.0</td><td>0.0</td><td>0.0</td> </tr> <tr> <td>18</td> <td>0.0</td><td>0.0</td><td>0.0</td><td>0.0</td><td>0.0</td><td>0.0</td><td>0.0</td><td>0.0</td><td>0.0</td><td>0.0</td><td>0.0</td><td>0.0</td><td>0.0</td><td>0.0</td><td>0.0</td><td>0.0</td><td>0.0</td><td>0.0</td><td>0.0</td><td>0.0</td><td>0.0</td><td>0.0</td><td>0.0</td><td>0.0</td><td>0.0</td> </tr> <tr> <td>19</td> <td>0.0</td><td>0.0</td><td>0.0</td><td>0.0</td><td>0.0</td><td>0.0</td><td>0.0</td><td>0.0</td><td>0.0</td><td>0.0</td><td>0.0</td><td>0.0</td><td>0.0</td><td>0.0</td><td>0.0</td><td>0.0</td><td>0.0</td><td>0.0</td><td>0.0</td><td>0.0</td><td>0.0</td><td>0.0</td><td>0.0</td><td>0.0</td><td>0.0</td> </tr> <tr> <td>20</td> <td>0.0</td><td>0.0</td><td>0.0</td><td>0.0</td><td>0.0</td><td>0.0</td><td>0.0</td><td>0.0</td><td>0.0</td><td>0.0</td><td>0.0</td><td>0.0</td><td>0.0</td><td>0.0</td><td>0.0</td><td>0.0</td><td>0.0</td><td>0.0</td><td>0.0</td><td>0.0</td><td>0.0</td><td>0.0</td><td>0.0</td><td>0.0</td><td>0.0</td> </tr> <tr> <td>21</td> <td>0.0</td><td>0.0</td><td>0.0</td><td>0.0</td><td>0.0</td><td>0.0</td><td>0.0</td><td>0.0</td><td>0.0</td><td>0.0</td><td>0.0</td><td>0.0</td><td>0.0</td><td>0.0</td><td>0.0</td><td>0.0</td><td>0.0</td><td>0.0</td><td>0.0</td><td>0.0</td><td>0.0</td><td>0.0</td><td>0.0</td><td>0.0</td><td>0.0</td> </tr> <tr> <td>22</td> <td>0.0</td><td>0.0</td><td>0.0</td><td>0.0</td><td>0.0</td><td>0.0</td><td>0.0</td><td>0.0</td><td>0.0</td><td>0.0</td><td>0.0</td><td>0.0</td><td>0.0</td><td>0.0</td><td>0.0</td><td>0.0</td><td>0.0</td><td>0.0</td><td>0.0</td><td>0.0</td><td>0.0</td><td>0.0</td><td>0.0</td><td>0.0</td><td>0.0</td> </tr> <tr> <td>23</td> <td>0.0</td><td>0.0</td><td>0.0</td><td>0.0</td><td>0.0</td><td>0.0</td><td>0.0</td><td>0.0</td><td>0.0</td><td>0.0</td><td>0.0</td><td>0.0</td><td>0.0</td><td>0.0</td><td>0.0</td><td>0.0</td><td>0.0</td><td>0.0</td><td>0.0</td><td>0.0</td><td>0.0</td><td>0.0</td><td>0.0</td><td>0.0</td><td>0.0</td> </tr> <tr> <td>24</td> <td>0.0</td><td>0.0</td><td>0.0</td><td>0.0</td><td>0.0</td><td>0.0</td><td>0.0</td><td>0.0</td><td>0.0</td><td>0.0</td><td>0.0</td><td>0.0</td><td>0.0</td><td>0.0</td><td>0.0</td><td>0.0</td><td>0.0</td><td>0.0</td><td>0.0</td><td>0.0</td><td>0.0</td><td>0.0</td><td>0.0</td><td>0.0</td><td>0.0</td> </tr> </table>	Day	0	1	2	3	4	5	6	7	8	9	10	11	12	13	14	15	16	17	18	19	20	21	22	23	24	01	0.0	0.0	0.0	0.0	0.0	0.0	0.0	0.0	0.0	0.0	0.0	0.0	0.0	0.0	0.0	0.0	0.0	0.0	0.0	0.0	0.0	0.0	0.0	0.0	0.0	02	0.0	0.0	0.0	0.0	0.0	0.0	0.0	0.0	0.0	0.0	0.0	0.0	0.0	0.0	0.0	0.0	0.0	0.0	0.0	0.0	0.0	0.0	0.0	0.0	0.0	03	0.0	0.0	0.0	0.0	0.0	0.0	0.0	0.0	0.0	0.0	0.0	0.0	0.0	0.0	0.0	0.0	0.0	0.0	0.0	0.0	0.0	0.0	0.0	0.0	0.0	04	0.0	0.0	0.0	0.0	0.0	0.0	0.0	0.0	0.0	0.0	0.0	0.0	0.0	0.0	0.0	0.0	0.0	0.0	0.0	0.0	0.0	0.0	0.0	0.0	0.0	05	0.0	0.0	0.0	0.0	0.0	0.0	0.0	0.0	0.0	0.0	0.0	0.0	0.0	0.0	0.0	0.0	0.0	0.0	0.0	0.0	0.0	0.0	0.0	0.0	0.0	06	0.0	0.0	0.0	0.0	0.0	0.0	0.0	0.0	0.0	0.0	0.0	0.0	0.0	0.0	0.0	0.0	0.0	0.0	0.0	0.0	0.0	0.0	0.0	0.0	0.0	07	0.0	0.0	0.0	0.0	0.0	0.0	0.0	0.0	0.0	0.0	0.0	0.0	0.0	0.0	0.0	0.0	0.0	0.0	0.0	0.0	0.0	0.0	0.0	0.0	0.0	08	0.0	0.0	0.0	0.0	0.0	0.0	0.0	0.0	0.0	0.0	0.0	0.0	0.0	0.0	0.0	0.0	0.0	0.0	0.0	0.0	0.0	0.0	0.0	0.0	0.0	09	0.0	0.0	0.0	0.0	0.0	0.0	0.0	0.0	0.0	0.0	0.0	0.0	0.0	0.0	0.0	0.0	0.0	0.0	0.0	0.0	0.0	0.0	0.0	0.0	0.0	10	0.0	0.0	0.0	0.0	0.0	0.0	0.0	0.0	0.0	0.0	0.0	0.0	0.0	0.0	0.0	0.0	0.0	0.0	0.0	0.0	0.0	0.0	0.0	0.0	0.0	11	0.0	0.0	0.0	0.0	0.0	0.0	0.0	0.0	0.0	0.0	0.0	0.0	0.0	0.0	0.0	0.0	0.0	0.0	0.0	0.0	0.0	0.0	0.0	0.0	0.0	12	0.0	0.0	0.0	0.0	0.0	0.0	0.0	0.0	0.0	0.0	0.0	0.0	0.0	0.0	0.0	0.0	0.0	0.0	0.0	0.0	0.0	0.0	0.0	0.0	0.0	13	0.0	0.0	0.0	0.0	0.0	0.0	0.0	0.0	0.0	0.0	0.0	0.0	0.0	0.0	0.0	0.0	0.0	0.0	0.0	0.0	0.0	0.0	0.0	0.0	0.0	14	0.0	0.0	0.0	0.0	0.0	0.0	0.0	0.0	0.0	0.0	0.0	0.0	0.0	0.0	0.0	0.0	0.0	0.0	0.0	0.0	0.0	0.0	0.0	0.0	0.0	15	0.0	0.0	0.0	0.0	0.0	0.0	0.0	0.0	0.0	0.0	0.0	0.0	0.0	0.0	0.0	0.0	0.0	0.0	0.0	0.0	0.0	0.0	0.0	0.0	0.0	16	0.0	0.0	0.0	0.0	0.0	0.0	0.0	0.0	0.0	0.0	0.0	0.0	0.0	0.0	0.0	0.0	0.0	0.0	0.0	0.0	0.0	0.0	0.0	0.0	0.0	17	0.0	0.0	0.0	0.0	0.0	0.0	0.0	0.0	0.0	0.0	0.0	0.0	0.0	0.0	0.0	0.0	0.0	0.0	0.0	0.0	0.0	0.0	0.0	0.0	0.0	18	0.0	0.0	0.0	0.0	0.0	0.0	0.0	0.0	0.0	0.0	0.0	0.0	0.0	0.0	0.0	0.0	0.0	0.0	0.0	0.0	0.0	0.0	0.0	0.0	0.0	19	0.0	0.0	0.0	0.0	0.0	0.0	0.0	0.0	0.0	0.0	0.0	0.0	0.0	0.0	0.0	0.0	0.0	0.0	0.0	0.0	0.0	0.0	0.0	0.0	0.0	20	0.0	0.0	0.0	0.0	0.0	0.0	0.0	0.0	0.0	0.0	0.0	0.0	0.0	0.0	0.0	0.0	0.0	0.0	0.0	0.0	0.0	0.0	0.0	0.0	0.0	21	0.0	0.0	0.0	0.0	0.0	0.0	0.0	0.0	0.0	0.0	0.0	0.0	0.0	0.0	0.0	0.0	0.0	0.0	0.0	0.0	0.0	0.0	0.0	0.0	0.0	22	0.0	0.0	0.0	0.0	0.0	0.0	0.0	0.0	0.0	0.0	0.0	0.0	0.0	0.0	0.0	0.0	0.0	0.0	0.0	0.0	0.0	0.0	0.0	0.0	0.0	23	0.0	0.0	0.0	0.0	0.0	0.0	0.0	0.0	0.0	0.0	0.0	0.0	0.0	0.0	0.0	0.0	0.0	0.0	0.0	0.0	0.0	0.0	0.0	0.0	0.0	24	0.0	0.0	0.0	0.0	0.0	0.0	0.0	0.0	0.0	0.0	0.0	0.0	0.0	0.0	0.0	0.0	0.0	0.0	0.0	0.0	0.0	0.0	0.0	0.0	0.0
Day	0	1	2	3	4	5	6	7	8	9	10	11	12	13	14	15	16	17	18	19	20	21	22	23	24																																																																																																																																																																																																																																																																																																																																																																																																																																																																																																																																																																																																																																																	
01	0.0	0.0	0.0	0.0	0.0	0.0	0.0	0.0	0.0	0.0	0.0	0.0	0.0	0.0	0.0	0.0	0.0	0.0	0.0	0.0	0.0	0.0	0.0	0.0	0.0																																																																																																																																																																																																																																																																																																																																																																																																																																																																																																																																																																																																																																																	
02	0.0	0.0	0.0	0.0	0.0	0.0	0.0	0.0	0.0	0.0	0.0	0.0	0.0	0.0	0.0	0.0	0.0	0.0	0.0	0.0	0.0	0.0	0.0	0.0	0.0																																																																																																																																																																																																																																																																																																																																																																																																																																																																																																																																																																																																																																																	
03	0.0	0.0	0.0	0.0	0.0	0.0	0.0	0.0	0.0	0.0	0.0	0.0	0.0	0.0	0.0	0.0	0.0	0.0	0.0	0.0	0.0	0.0	0.0	0.0	0.0																																																																																																																																																																																																																																																																																																																																																																																																																																																																																																																																																																																																																																																	
04	0.0	0.0	0.0	0.0	0.0	0.0	0.0	0.0	0.0	0.0	0.0	0.0	0.0	0.0	0.0	0.0	0.0	0.0	0.0	0.0	0.0	0.0	0.0	0.0	0.0																																																																																																																																																																																																																																																																																																																																																																																																																																																																																																																																																																																																																																																	
05	0.0	0.0	0.0	0.0	0.0	0.0	0.0	0.0	0.0	0.0	0.0	0.0	0.0	0.0	0.0	0.0	0.0	0.0	0.0	0.0	0.0	0.0	0.0	0.0	0.0																																																																																																																																																																																																																																																																																																																																																																																																																																																																																																																																																																																																																																																	
06	0.0	0.0	0.0	0.0	0.0	0.0	0.0	0.0	0.0	0.0	0.0	0.0	0.0	0.0	0.0	0.0	0.0	0.0	0.0	0.0	0.0	0.0	0.0	0.0	0.0																																																																																																																																																																																																																																																																																																																																																																																																																																																																																																																																																																																																																																																	
07	0.0	0.0	0.0	0.0	0.0	0.0	0.0	0.0	0.0	0.0	0.0	0.0	0.0	0.0	0.0	0.0	0.0	0.0	0.0	0.0	0.0	0.0	0.0	0.0	0.0																																																																																																																																																																																																																																																																																																																																																																																																																																																																																																																																																																																																																																																	
08	0.0	0.0	0.0	0.0	0.0	0.0	0.0	0.0	0.0	0.0	0.0	0.0	0.0	0.0	0.0	0.0	0.0	0.0	0.0	0.0	0.0	0.0	0.0	0.0	0.0																																																																																																																																																																																																																																																																																																																																																																																																																																																																																																																																																																																																																																																	
09	0.0	0.0	0.0	0.0	0.0	0.0	0.0	0.0	0.0	0.0	0.0	0.0	0.0	0.0	0.0	0.0	0.0	0.0	0.0	0.0	0.0	0.0	0.0	0.0	0.0																																																																																																																																																																																																																																																																																																																																																																																																																																																																																																																																																																																																																																																	
10	0.0	0.0	0.0	0.0	0.0	0.0	0.0	0.0	0.0	0.0	0.0	0.0	0.0	0.0	0.0	0.0	0.0	0.0	0.0	0.0	0.0	0.0	0.0	0.0	0.0																																																																																																																																																																																																																																																																																																																																																																																																																																																																																																																																																																																																																																																	
11	0.0	0.0	0.0	0.0	0.0	0.0	0.0	0.0	0.0	0.0	0.0	0.0	0.0	0.0	0.0	0.0	0.0	0.0	0.0	0.0	0.0	0.0	0.0	0.0	0.0																																																																																																																																																																																																																																																																																																																																																																																																																																																																																																																																																																																																																																																	
12	0.0	0.0	0.0	0.0	0.0	0.0	0.0	0.0	0.0	0.0	0.0	0.0	0.0	0.0	0.0	0.0	0.0	0.0	0.0	0.0	0.0	0.0	0.0	0.0	0.0																																																																																																																																																																																																																																																																																																																																																																																																																																																																																																																																																																																																																																																	
13	0.0	0.0	0.0	0.0	0.0	0.0	0.0	0.0	0.0	0.0	0.0	0.0	0.0	0.0	0.0	0.0	0.0	0.0	0.0	0.0	0.0	0.0	0.0	0.0	0.0																																																																																																																																																																																																																																																																																																																																																																																																																																																																																																																																																																																																																																																	
14	0.0	0.0	0.0	0.0	0.0	0.0	0.0	0.0	0.0	0.0	0.0	0.0	0.0	0.0	0.0	0.0	0.0	0.0	0.0	0.0	0.0	0.0	0.0	0.0	0.0																																																																																																																																																																																																																																																																																																																																																																																																																																																																																																																																																																																																																																																	
15	0.0	0.0	0.0	0.0	0.0	0.0	0.0	0.0	0.0	0.0	0.0	0.0	0.0	0.0	0.0	0.0	0.0	0.0	0.0	0.0	0.0	0.0	0.0	0.0	0.0																																																																																																																																																																																																																																																																																																																																																																																																																																																																																																																																																																																																																																																	
16	0.0	0.0	0.0	0.0	0.0	0.0	0.0	0.0	0.0	0.0	0.0	0.0	0.0	0.0	0.0	0.0	0.0	0.0	0.0	0.0	0.0	0.0	0.0	0.0	0.0																																																																																																																																																																																																																																																																																																																																																																																																																																																																																																																																																																																																																																																	
17	0.0	0.0	0.0	0.0	0.0	0.0	0.0	0.0	0.0	0.0	0.0	0.0	0.0	0.0	0.0	0.0	0.0	0.0	0.0	0.0	0.0	0.0	0.0	0.0	0.0																																																																																																																																																																																																																																																																																																																																																																																																																																																																																																																																																																																																																																																	
18	0.0	0.0	0.0	0.0	0.0	0.0	0.0	0.0	0.0	0.0	0.0	0.0	0.0	0.0	0.0	0.0	0.0	0.0	0.0	0.0	0.0	0.0	0.0	0.0	0.0																																																																																																																																																																																																																																																																																																																																																																																																																																																																																																																																																																																																																																																	
19	0.0	0.0	0.0	0.0	0.0	0.0	0.0	0.0	0.0	0.0	0.0	0.0	0.0	0.0	0.0	0.0	0.0	0.0	0.0	0.0	0.0	0.0	0.0	0.0	0.0																																																																																																																																																																																																																																																																																																																																																																																																																																																																																																																																																																																																																																																	
20	0.0	0.0	0.0	0.0	0.0	0.0	0.0	0.0	0.0	0.0	0.0	0.0	0.0	0.0	0.0	0.0	0.0	0.0	0.0	0.0	0.0	0.0	0.0	0.0	0.0																																																																																																																																																																																																																																																																																																																																																																																																																																																																																																																																																																																																																																																	
21	0.0	0.0	0.0	0.0	0.0	0.0	0.0	0.0	0.0	0.0	0.0	0.0	0.0	0.0	0.0	0.0	0.0	0.0	0.0	0.0	0.0	0.0	0.0	0.0	0.0																																																																																																																																																																																																																																																																																																																																																																																																																																																																																																																																																																																																																																																	
22	0.0	0.0	0.0	0.0	0.0	0.0	0.0	0.0	0.0	0.0	0.0	0.0	0.0	0.0	0.0	0.0	0.0	0.0	0.0	0.0	0.0	0.0	0.0	0.0	0.0																																																																																																																																																																																																																																																																																																																																																																																																																																																																																																																																																																																																																																																	
23	0.0	0.0	0.0	0.0	0.0	0.0	0.0	0.0	0.0	0.0	0.0	0.0	0.0	0.0	0.0	0.0	0.0	0.0	0.0	0.0	0.0	0.0	0.0	0.0	0.0																																																																																																																																																																																																																																																																																																																																																																																																																																																																																																																																																																																																																																																	
24	0.0	0.0	0.0	0.0	0.0	0.0	0.0	0.0	0.0	0.0	0.0	0.0	0.0	0.0	0.0	0.0	0.0	0.0	0.0	0.0	0.0	0.0	0.0	0.0	0.0																																																																																																																																																																																																																																																																																																																																																																																																																																																																																																																																																																																																																																																	



The reports can be viewed on laptops, desktop computers, smart phones & tablets.

The calendar's format allows you to see the daily operation times of your machine with ease. This report helps you analyse the operation trend of each machine.

The daily operation report shows in detail when the machine is operating and idle time, which is represented by different colours in the 24-hour timeline.

Parts and Service

Parts

Genuine Tata Hitachi Parts
 Genuine Tata Hitachi parts meet our stringent quality standards. These parts are guaranteed to perform and are backed by Tata Hitachi's warranty. The use of genuine Tata Hitachi parts including all filters and lubricants will slash your running costs and extend your machine's life.

Ground Engaging Tools (GETs)
 Tata Hitachi provides an array of Ground Engaging tools developed and built for a variety of applications. Using high quality and well maintained GETs will help you get optimum performance.

Service

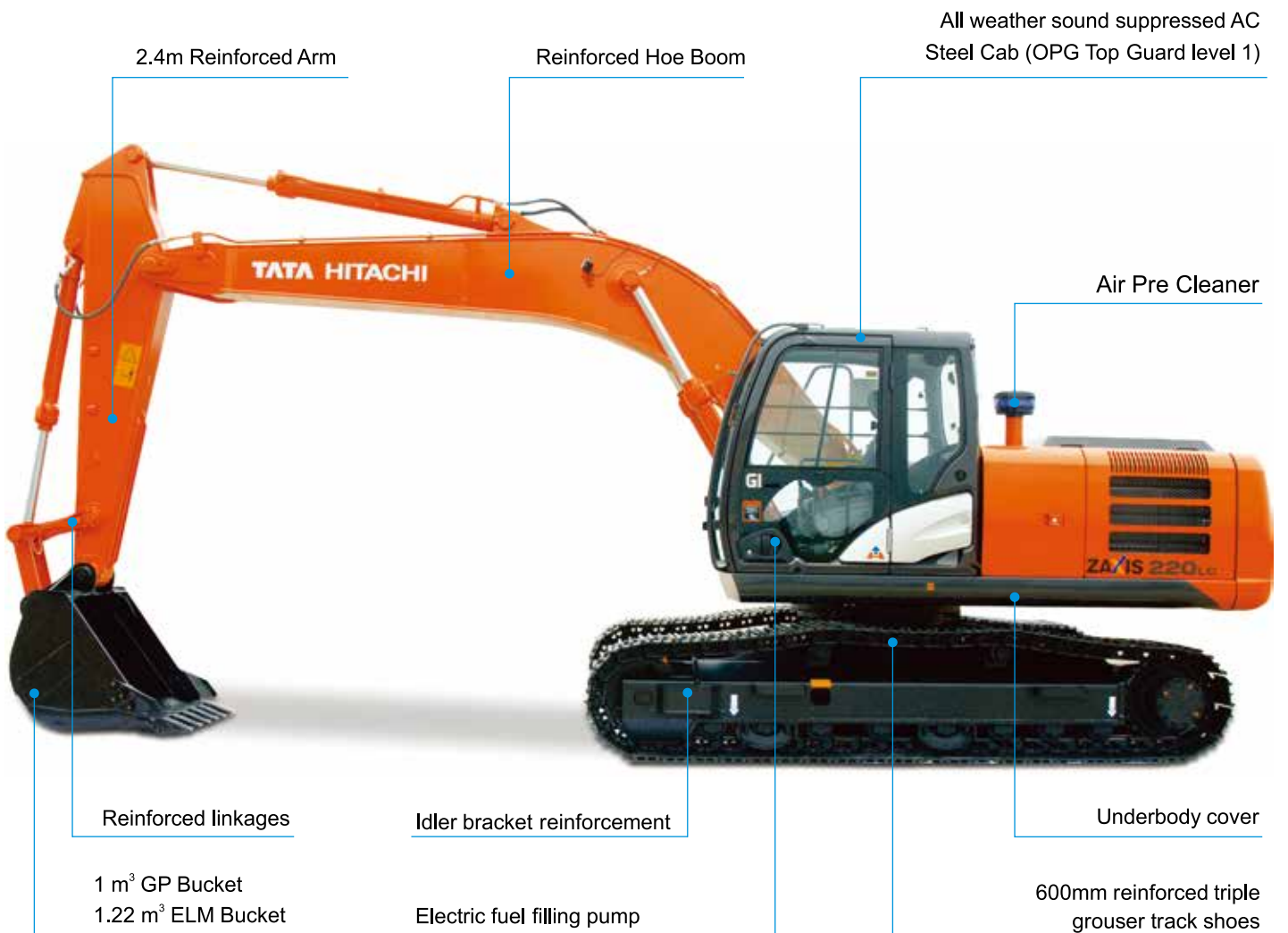
With our wide network across India, Tata Hitachi strives to offer you a superior service and support experience. The GI series machines are serviced by technicians and engineers specially trained to take good care of your machines. With a combination of our reach and skilled personnel, we aim to increase the uptime of your machines.

Diagnostic Tools – Maintenance Pro
 Apart from mechanical repairs, the electronic control system needs quick on-site solutions, Tata Hitachi's Maintenance Pro can diagnose machine failures in a short time by plugging a PC into a failed machine.

Variants



ZAXIS 220LC





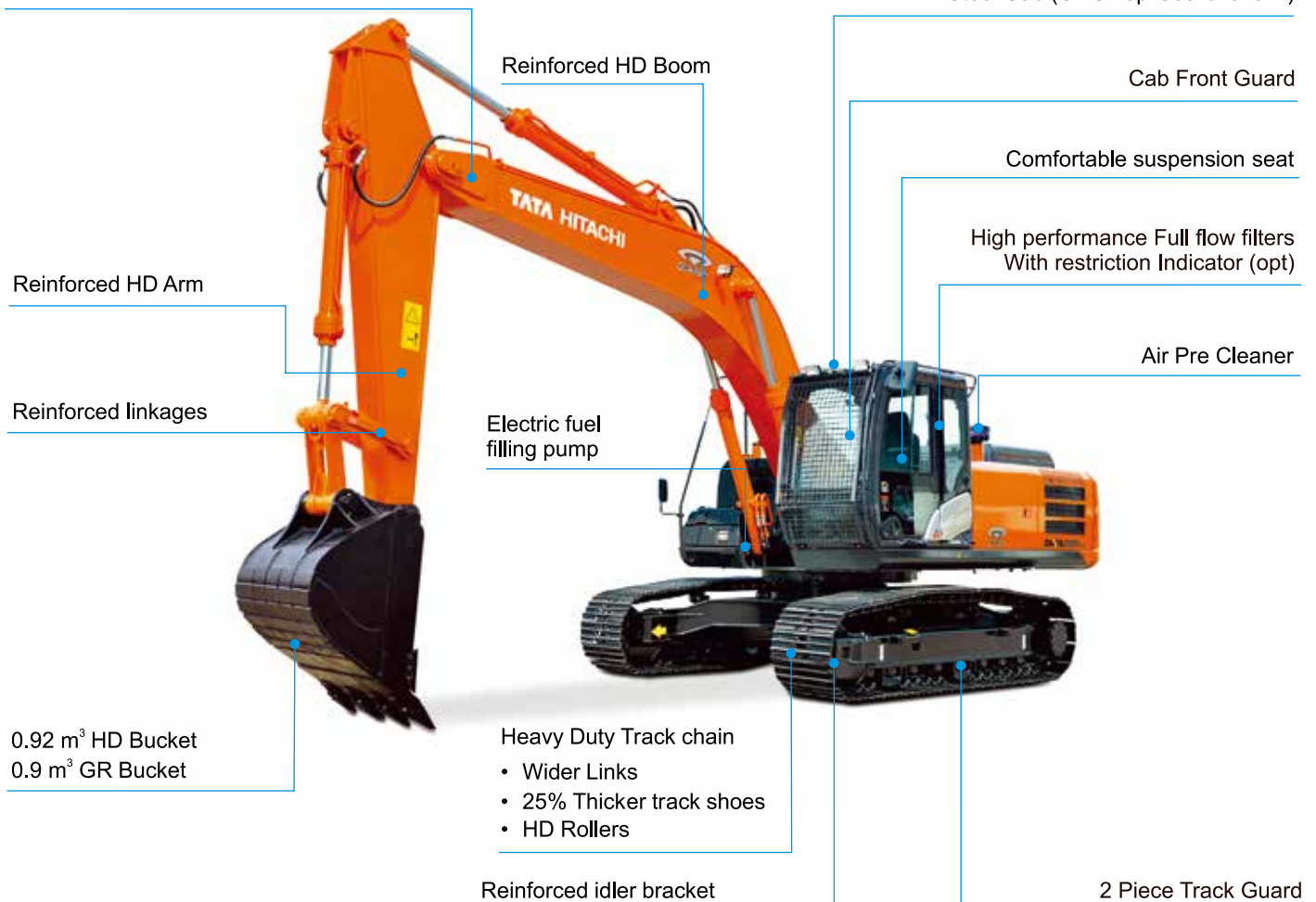
The photos above show machine images at work, which include machines other than ZAXIS 220LC-M

ZAXIS 220LC



Rock breaker piping kit with Return line filter (optional)

All weather sound suppressed AC Steel Cab (OPG Top Guard level 1)



SPECIFICATIONS

ENGINE

Model	Isuzu CC-6BG1T
Type	4-cycle water-cooled, direct injection
Aspiration	Turbocharged, intercooled
No. of cylinders	6
Rated power	
ISO 9249, net	170 PS (125 kW) at 2 100 min ⁻¹ (rpm)
SAE J1349, net	170 PS (125 kW) at 2 100 min ⁻¹ (rpm)
Maximum torque	637 Nm (65 kgfm) at 1 800 min ⁻¹ (rpm)
Piston displacement ..	6.494 L
Bore and stroke	105 mm x 125 mm
Batteries	2 x 12 V / 88 Ah

HYDRAULIC SYSTEM

Hydraulic Pumps

Main pumps	2 variable displacement axial piston pumps
Maximum oil flow ..	2 x 212 L/min
Pilot pump	1 gear pump
Maximum oil flow ..	33.6 L/min

Hydraulic Motors

Travel	2 variable displacement swash plate piston motors
Swing	1 axial piston motor

Relief Valve Settings

Implement circuit	350 kgf/cm ² (34.3 MPa)
Swing circuit	310 kgf/cm ² (30.4 MPa)
Travel circuit	350 kgf/cm ² (34.3 MPa)
Pilot circuit	40 kgf/cm ² (3.9 MPa)
Power boost	388 kgf/cm ² (38.0 MPa)

Hydraulic Cylinders

	Quantity	Bore	Rod diameter
Boom	2	120 mm	85 mm
Arm	1	135 mm	95 mm
Bucket	1	115 mm	80 mm

UPPERSTRUCTURE

Revolving Frame

D-section frame skirt for resistance to deformation.

Swing Device

Axial piston motor with planetary reduction gear is bathed in oil. Swing circle is single-row. Swing parking brake is spring-set/hydraulic-released disc type.

Swing speed	13.0 min ⁻¹ (rpm)
Swing torque	61 kNm (6 200 kgfm)

Operator's Cab

Independent spacious cab, 1 005 mm wide by 1 675 mm high, conforming to ISO* Standards.

* International Organization for Standardization

UNDERCARRIAGE

Tracks

Heat-treated connecting pins with dirt seals. Hydraulic (grease) track adjusters with shock-absorbing recoil springs.

Numbers of Rollers and Shoes on Each Side

Upper rollers	2
Lower rollers	8
Track shoes	49
Track guards	3

Travel Device

Each track driven by 2-speed axial piston motor. Parking brake is spring-set/hydraulic-released disc type. Automatic transmission system: High-Low.

Travel speeds	High : 0 to 5.5 km/h
	Low : 0 to 3.5 km/h

Maximum traction force .. 184 kN (18 800 kgf)

Gradeability

70% (35 degree) continuous

SERVICE REFILL CAPACITIES

Fuel tank	400.0 L
Engine coolant	23.0 L
Engine oil	25.0 L
Swing device	6.2 L
Travel device (each side)	6.8 L
Hydraulic system	240.0 L
Hydraulic oil tank	135.0 L

SPECIFICATIONS

WEIGHTS AND GROUND PRESSURE

Operating weight and Ground pressure

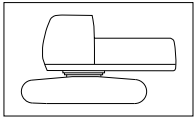
			ZX220LC-GI (STD) ^{*1}		ZX220LC-GI (HD) ^{*2}	
Shoe type	Shoe width	Arm length	kg	kPa (kgf/cm ²)	kg	kPa (kgf/cm ²)
Triple grouser	600 mm	2.22 m	21 200	48 (0.49)	21 300	48 (0.49)
		2.4 m	21 200	48 (0.49)	21 300	48 (0.49)
		2.91 m	21 400	49 (0.50)	21 500	48 (0.49)
Triple grouser HD	600 mm	2.22 m	21 400	49 (0.50)	21 500	49 (0.50)
		2.4 m	21 400	49 (0.50)	21 500	49 (0.50)
		2.91 m	21 600	49 (0.50)	21 700	49 (0.50)

*1 :Including 1.00 m³ (ISO heaped) bucket weight (STD: 804 kg) and counterweight (4 600 kg).

*2 :Including 0.90 m³ (ISO heaped) bucket weight (HD: 944 kg) and counterweight (4 600 kg).

WEIGHT: BASIC MACHINE and COMPONENTS

Basic Machine Weight and Overall width



Excluding front-end attachment, fuel, hydraulic oil, coolant, etc., and including counterweight.

ZX220LC-GI (STD / HD)

Shoe width	Weight	Overall width
600 mm	16 500 kg	2 990 mm
600 mm HD	16 900 kg	2 990 mm

Component weights

	ZX220LC-GI (STD / HD)
Counterweight	4 600 kg
Boom (with boom and arm cylinder)	2 030 kg
2.22 m arm (with bucket cylinder)	744 kg
2.4 m arm (with bucket cylinder)	791 kg
2.91 m arm (with bucket cylinder)	947 kg
1.00 m ³ bucket	803 kg
0.90 m ³ HD bucket	890 kg

BUCKET AND ARM DIGGING FORCES

Arm length	2.22 m	2.4 m (STD)	2.91 m
Bucket digging force* ISO	158 kN (16 100 kgf)	158 kN (16 100 kgf)	158 kN (16 100 kgf)
Bucket digging force* SAE : PCSA	139 kN (14 200 kgf)	139 kN (14 200 kgf)	139 kN (14 200 kgf)
Arm crowd force* ISO	147 kN (15 000 kgf)	139 kN (14 200 kgf)	114 kN (11 600 kgf)
Arm crowd force* SAE : PCSA	141 kN (14 400 kgf)	133 kN (13 600 kgf)	110 kN (11 200 kgf)

* At power boost

BACKHOE ATTACHMENTS

Capacity	Width		No. of teeth	Weight	Recommendation		
					ZX220LC-GI (STD / HD)		
	With side cutters	Without side cutters			2.22 m arm	2.4 m arm	2.91 m arm
ISO heaped							
0.92 m ³ (HD)	—	1 010 mm	4	944 kg	●	●	—
0.90 m ³ (GR)	—	1 010 mm	4	880 kg	●	●	—
1.00 m ³	1 340 mm	1 230 mm	6	804 kg	◎	○	○
0.90 m ³ (GP)	1 240 mm	1 130 mm	5	769 kg	◎	◎	◎
1.22 m ³ (ELM)	1 570 mm	1 460 mm	6	857 kg	■	■	—

◎ Suitable for materials with density of 2 000 kg/m³ or less

○ Suitable for materials with density of 1 800 kg/m³ or less

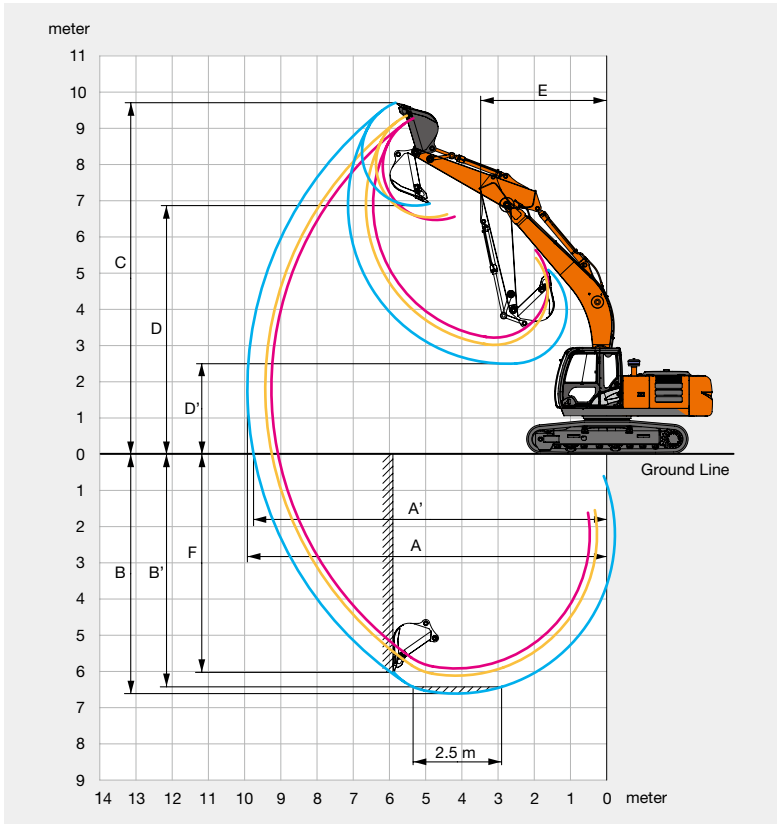
■ Suitable for materials with density of 1 100 kg/m³ or less

● Heavy-duty service

— Not applicable

HD: Heavy duty GR: Granite GP: General purpose

WORKING RANGES

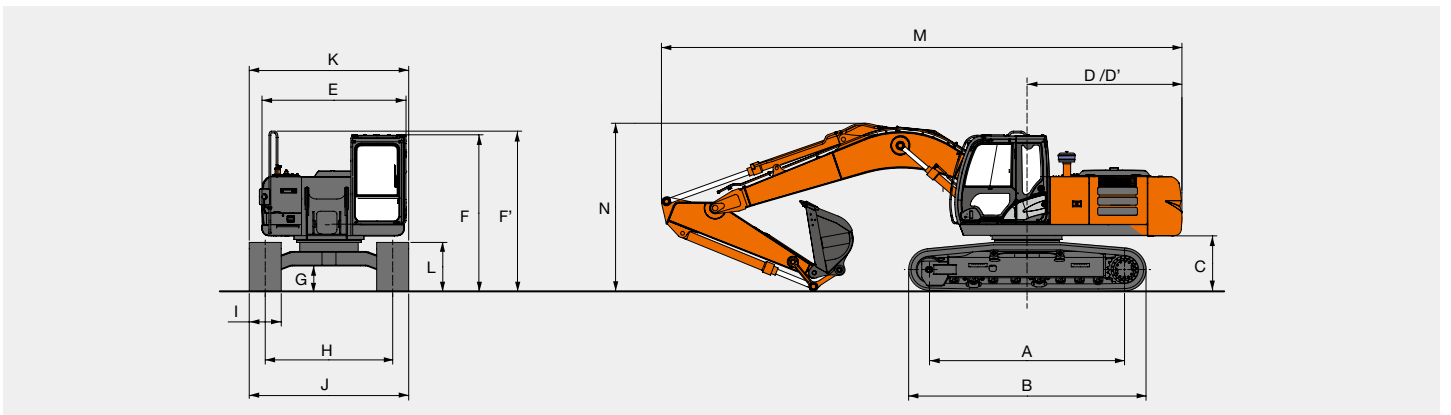


Unit: mm

Boom length	5.68 m		
	2.22 m	2.4 m	2.91 m
A Max. digging reach	9 260	9 430	9 920
A' Max. digging reach (on ground)	9 080	9 250	9 750
B Max. digging depth	5 920	6 120	6 610
B' Max. digging depth (2.5 m level)	5 680	5 890	6 420
C Max. cutting height	9 250	9 330	9 680
D Max. dumping height	6 450	6 520	6 850
D' Min. dumping height	3 210	3 010	2 490
E Min. swing radius	3 530	3 520	3 490
F Max. vertical wall digging depth	5 420	5 620	6 030

Excluding track shoe lug

DIMENSIONS

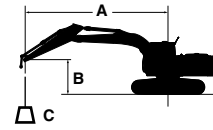


Unit: mm

	ZX220LC-GI (STD / HD)		ZX220LC-GI (STD / HD)
A Distance between tumblers	3 660	J Undercarriage width	2 990
B Undercarriage length	4 460	K Overall width	2 990
* C Counterweight clearance	1 040	* L Track height with triple grouser shoes	920
D Rear-end swing radius	2 910	M Overall length With 2.22 m arm	9 760
D' Rear-end length	2 910	With 2.4 m arm	9 680
E Overall width of upperstructure	2 700	With 2.91 m arm	9 680
F Overall height of cab	2 940	N Overall height of boom With 2.22 m arm	3 150
F' Overall height of upperstructure	3 010	With 2.4 m arm	3 050
* G Min. ground clearance	450	With 2.91 m arm	3 010
H Track gauge	2 390	* Excluding track shoe lug G: Triple grouser shoe	
I Track shoe width	600		

LIFTING CAPACITIES (Without Bucket)

- Notes: 1. Ratings are based on ISO 10567.
 2. Lifting capacity does not exceed 75% of tipping load with the machine on firm, level ground or 87% full hydraulic capacity.
 3. The load point is the center-line of the bucket pivot mounting pin on the arm.
 4. *Indicates load limited by hydraulic capacity.
 5. 0 m = Ground.



A: Load radius
 B: Load point height
 C: Lifting capacity

For lifting capacities, subtract bucket and quick hitch weight from lifting capacities without bucket.

ZX220LC-GI (STD/HD)

Rating over-front Rating over-side or 360 degrees Unit : kg

Conditions	Load point height m	Load radius										At max. reach		
		1.5 m		3.0 m		4.5 m		6.0 m		7.5 m				meter
Boom 5.68 m	6.0							*5 430	5 410			*5 520	4 470	6.75
Arm 2.4 m	4.5					*6 910	*6 910	*5 930	5 270			*5 620	3 740	7.49
Counterweight 4 600 kg	3.0					*8 850	7 600	*6 780	5 040	5 540	3 650	5 140	3 390	7.87
Shoe 600 mm	1.5					*10 500	7 160	7 560	4 830	5 430	3 550	4 990	3 270	7.95
	0 (Ground)					*11 210	6 970	7 400	4 690	5 360	3 490	5 130	3 350	7.74
	-1.5			*9 900	*9 900	*11 080	6 950	7 360	4 660			5 670	3 670	7.21
	-3.0			*14 070	13 680	*10 130	7 060	7 450	4 740			*6 980	4 470	6.28
	-4.5					*7 560	7 350					*7 110	6 890	4.71

ZX220LC-GI (Optional)

Rating over-front Rating over-side or 360 degrees Unit : kg

Conditions	Load point height m	Load radius										At max. reach		
		1.5 m		3.0 m		4.5 m		6.0 m		7.5 m				meter
Boom 5.68 m	6.0							*5 640	5 370			*5 710	4 660	6.55
Arm 2.22 m	4.5					*7 180	*7 180	*6 100	5 230			*5 790	3 860	7.31
Counterweight 4 600 kg	3.0					*9 120	7 540	*6 920	5 010	5 520	3 630	5 300	3 490	7.70
Shoe 600 mm (HD)	1.5					*10 680	7 130	7 540	4 810	5 420	3 540	5 140	3 360	7.78
	0 (Ground)					*11 250	6 970	7 400	4 690	5 370	3 490	5 300	3 450	7.57
	-1.5			*9 950	*9 950	*11 000	6 970	7 370	4 670			5 890	3 810	7.02
	-3.0			*13 600	*13 600	*9 920	7 090	*7 220	4 770			*7 100	4 710	6.06
	-4.5													

ZX220LC-GI (Optional)

Rating over-front Rating over-side or 360 degrees Unit : kg

Conditions	Load point height m	Load radius										At max. reach		
		1.5 m		3.0 m		4.5 m		6.0 m		7.5 m				meter
Boom 5.68 m	6.0							*4 810	*4 810			*3 970	3 870	7.33
Arm 2.91 m	4.5					*6 080	*6 080	*5 370	5 250	*5 080	3 690	*3 920	3 300	8.01
Counterweight 4 600 kg	3.0					*8 020	7 640	*6 270	5 000	*5 470	3 580	*4 030	3 010	8.37
Shoe 600 mm	1.5					*9 850	7 130	*7 200	4 760	5 350	3 460	*4 310	2 900	8.45
	0 (Ground)			*4 770	*4 770	*10 870	6 860	7 300	4 590	5 250	3 370	4 580	2 960	8.25
	-1.5	*5 410	*5 410	*9 040	*9 040	*11 030	6 780	7 220	4 520	5 220	3 350	4 990	3 210	7.75
	-3.0	*9 910	*9 910	*14 930	13 340	*10 400	6 850	7 260	4 550			5 950	3 800	6.90
	-4.5			*12 110	*12 110	*8 580	7 070					*6 640	5 330	5.51

EQUIPMENT

Standard and optional equipment may vary by country, so please consult your Hitachi dealer for details.

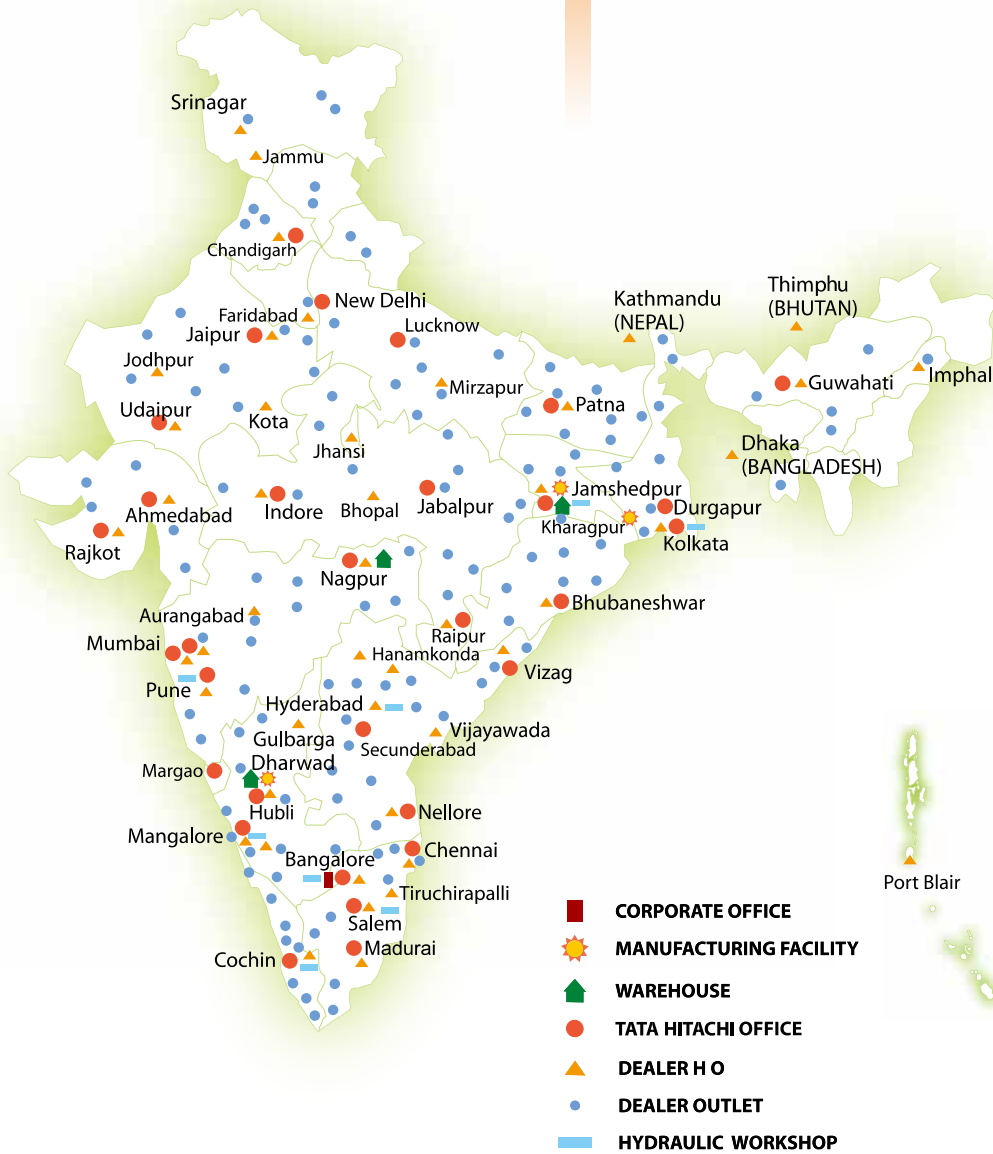
● : Standard equipment

○ : Optional equipment

	ZX220LC-GI STD	ZX220LC-GI HD
ENGINE		
Air cleaner double filters	●	●
Auto idle system	●	●
Cartridge-type engine oil filter	●	●
Cartridge-type fuel pre-filter	●	●
Cartridge-type fuel main filter	●	●
Dry-type air filter with evacuator valve (with air filter restriction indicator)	●	●
ECO/PWR mode control	●	●
Fan guard	●	●
Water separator	●	●
Pre-cleaner	●	●
Dust-Proof indoor net	●	●
Radiator reserve tank	●	●
50 A alternator	●	●
HYDRAULIC SYSTEM		
Auto power lift	●	●
Control valve with main relief valve	●	●
Full-flow filter	●	●
High mesh full flow filter with restriction indicator	○	○
Pilot filter	●	●
Power boost	●	●
Suction filter	●	●
Extra port for control valve	●	●
Work mode selector	●	●
CAB		
All-weather sound suppressed steel cab	●	●
AM-FM radio with 2 speakers	●	●
Ashtray	●	●
Auto control air conditioner	●	●
Drink holder	●	●
Drink holder with hot & cool	●	●
Electric horn	●	●
Engine shut-off lever	●	●
Evacuation hammer	●	●
Floor mat	●	●
Footrest	●	●
Front window washer	●	●
Front windows on upper, lower and left side can be opened	●	●
Lower cab front guard	○	●
Upper cab front guard	○	●
Hot & cool box	●	●
Intermittent windshield wipers	●	●
Room light	●	●
OPG top guard Level 1 (Equivalent to ISO10262) cab	●	●
Pilot control shut-off lever	●	●
Rear tray	●	●
Seat belt	●	●
Rubber radio antenna	●	●
Seat : Fabric seat	●	○
Seat : Mechanical suspension seat	○	●
Seat adjustment : backrest, armrest, height and angle, slide forward / back	●	●
Short wrist control levers	●	●
4 fluid-filled elastic mounts	●	●
MONITOR SYSTEM		
Meters : Hr meter, trip-meter, engine coolant temperature gauge and fuel gauge	●	●
Warning lamps : Alternator charge, engine oil pressure, engine overheat, air filter restriction and minimum fuel level	●	●
Pilot lamps : Engine preheat, engine oil level, engine coolant level, hydraulic oil level, work light, auto-idle, and attachment mode	●	●
Alarm buzzers : Engine oil pressure and engine overheat	●	●

	ZX220LC-GI STD	ZX220LC-GI HD
LIGHTS		
Additional cab roof front lights	●	●
Additional boom light with cover (right side)	○	●
2 working lights (boom left side, tool box)	●	●
UPPER STRUCTURE		
Electric fuel refilling pump	●	●
Fuel level float	●	●
Hydraulic oil level gauge	●	●
Rear view mirror (right & left side)	●	●
Swing parking brake	●	●
Tool box	●	●
Undercover	●	●
Utility space (behind cabin)	●	●
UNDERCARRIAGE		
Bolt-on sprocket	●	●
Reinforced track links with pin seals	●	●
Reinforced idler bracket	●	●
Travel motor covers	●	●
Travel parking brake	●	●
Track guard (each side) and hydraulic track adjuster	●	●
Upper and lower rollers	●	●
2 track guards	●	—
4 tie down hooks	●	●
600 mm triple grouser shoes	●	○
600 mm HD triple grouser shoes	○	●
500 mm triple grouser shoes	○	○
FRONT ATTACHMENTS		
Centralized lubrication system	●	●
Dirt seal on all bucket pins	●	●
Flanged pin	●	●
Reinforced link B	●	●
WC (tungsten-carbide) thermal spraying	●	●
Seat screws for breaker attachment	●	●
ATTACHMENTS		
Rock breaker piping	○	○
Breaker and crusher piping	○	○
High mesh full flow filter with restriction indicator	○	○
Parts for breaker and crusher	○	○
2 pump combined flow for attachment basic piping	○	○
Line filter	○	○
MISCELLANEOUS		
Auto Lubrication	○	○
Lockable fuel refilling cap	●	●
Lockable machine covers	●	●
Onboard information controller	●	●
Skid-resistant tapes, plates and handrails	●	●
Standard tool kit	●	●
Travel direction mark on track frame	●	●
Global e-Service	●	●

OUR NETWORK



Tata Hitachi Construction Machinery Company Private Limited

Registered Office: Jubilee Building, 45 Museum Road, Bangalore, India 560025

Telephone: +91 80 6695 3301 / 02 / 03 / 04 / 05 | Toll Free : 1800 121 6633

Email: info@tatahitachi.co.in | Website: www.tatahitachi.co.in | [f](#) [t](#) [in](#) [@](#) [v](#)

These specifications are subject to change without prior notice. The machine depicted may vary from the actual machine. Please contact our nearest office for latest specifications. Accessories shown here are not part of the standard equipment. Performance of the machine may vary with site and operating conditions encountered.

Authorised Dealership